

BACKGROUND INFORMATION

Hadley's Gallery

Hadley's Orient Hotel opened the *Hadley's Gallery* in December 2016.

This was the first step in a vision to reinstate Hadley's vital support and contribution to Tasmanian art.

The hotel is building up an impressive collection that will be open to the public, and is expected to become a drawcard in the growing cultural tourism sector.

The acquisitive *Hadley's Art Prize, Hobart* will also help to grow a collection of national significance.

In collaboration with the Tasmanian Museum and Art Gallery and the Royal Society of Tasmania, *Hadley's Gallery* currently houses a permanent collection of rare reproductions of three key artists active in Tasmania during the nineteenth century.

The works by John Skinner Prout, Louisa Ann Meredith and Francis Guillemard Simpkinson De Wesselow, highlight popular themes of that period.

These high quality reproductions have been curated from the works on paper collection at the Tasmanian Museum and Art Gallery and the Royal Society of Tasmania.



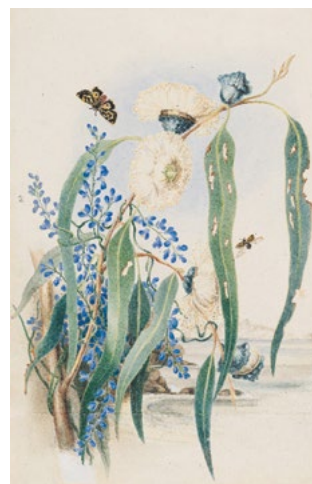
FRANCIS GUILLEMARD
SIMPKINSON DE WESSELOW
*Fern Tree Valley, Mount Wellington
(VDL) c.1848*

Reproduced from the Royal Society
of Tasmania collection, Tasmanian
Museum and Art Gallery



JOHN SKINNER PROUT
Hobart Town from Knocklofty 1845

Reproduced from the Tasmanian
Museum and Art Gallery collection



LOUISA ANNE MEREDITH
Gum Flowers, and 'Love' 1860

Reproduced from the Royal Society
of Tasmania collection, Tasmanian
Museum and Art Gallery

Hadley's Gallery

Open to the Public: 10am – 4pm daily

Hadley's Orient Hotel, 34 Murray St Hobart

Media Enquiries:

Anna McMahan

Timmins Ray Public Relations

Phone: 0406 912 222

Email: anna@timminsray.com.au



HADLEY'S ORIENT HOTEL
34 Murray Street
Hobart, Tasmania, 7000
Phone: +613 6237 2999
www.hadleyshotel.com.au